

Not to be outdone by its first-rate attractions and entertainment, Charlotte certainly knows shopping. From the top names at manufacturer and retail outlets to the upscale boutiques and unique shops nestled along neighborhood streets, Charlotte has style. Bargain hunters can comb the antique villages, art galleries, and outdoor markets for exclusive finds. Meanwhile, style mavens can frequent the friendly confines of destination shopping malls including Carolina Place, SouthPark Mall, Northlake Mall and more. And while Paris may have couture, the Piedmont region is certainly the epicenter of the furniture world. Peruse the vast number of nearby furniture marts featuring tremendous selection and the latest designs from acclaimed furniture vendors. Charlotte's selection of shopping venues will leave you urging to splurge.

shopping

Located less than 15 minutes from Center City Charlotte, the region's largest mall, **Concord Mills**, attracts 15 million in attendance each year with its 200 retailers, outlets, and restaurants. Favorites include Sun & Ski Sports boasting a rock-climbing wall and deck for ski and snowboard instruction, Off 5th Saks Fifth Avenue Outlet, and Build-A-Bear Workshop. Covering more than 150,000 square feet, you'll need a map to navigate your way through Bass Pro Shops Outdoor World. With its 23,000-gallon aquarium, waterfall and trout stream, the angler's paradise stocks more than 3,500 rods and 14,000 types of lures as well as a complete array of hunting, fishing, boating and camping gear. concordmills.com

SouthPark Mall, the luxury shopping destination of the Carolinas, draws in fashionistas from near and far with more than 150 fine retailers. A recent expansion attracted two high-end anchors to the mix, Nordstrom and Neiman Marcus, as well as a bevy of exclusive retail such as Tiffany's, Hermes, and Louis Vuitton. SouthPark Mall currently boasts over 1.5 million square feet and houses some of the nation's trendiest restaurant franchises such as The Cheesecake Factory, Maggiano's Little Italy, Morton's Steakhouse and McCormick & Schmick's. Nearby Village of SouthPark opened Charlotte's first Crate & Barrel and has attracted other boutiques and brand names to the elegant promenade. Within the mall grounds, an outdoor pavilion called Symphony Park stages an annual "Pops in the Park" free concert series during the summer months. simon.com

Inside the pretty peach and pale yellow stucco main street exteriors at **Phillips Place** are essentials for consumers craving the very best. Located in the South Park neighborhood, tenants in this swank development include Dean & DeLuca, specialty boutiques like Smith & Hawken and Restoration Hardware, and upscale dining like The Palm Restaurant and P.F. Chang's China Bistro. Pedestrian-friendly accents such as alfresco dining, sculptures, fountains, and shops lining beautifully-landscaped paths make this an inviting thoroughfare. Capitol, a sophisticated women's couture boutique with collections by Calvin Klein, Narciso Rodriguez and Marc Jacobs, has been recognized by Style.com as "One of the Four Best Places in the South for Luxury Shopping." phillipsplace.info



Luckily for fans of the visual arts, Charlotte has galleries galore. The **NoDa** neighborhood is located in North Charlotte's historic mill village, two miles from Center City on North Davidson Street. Home to a funky collection of galleries, performance venues and amazing cuisine, NoDa features an eclectic mix of shops along its unique streetscape. Gallery crawls take place here every first and third Friday of the month. **Historic South End**, a district with many revamped industrial buildings just a trolley stop south of Center City, features Atherton Mill, a former textile mill transformed into specialty shops. Visitors can stroll through miscellaneous stores such as EQ3 and the Canine Cafe, pay a visit to the many galleries, or refuel at local haunts like Pike's Old Fashioned Soda Shop or Pewter Rose Bistro. noda.org historicsouthend.com

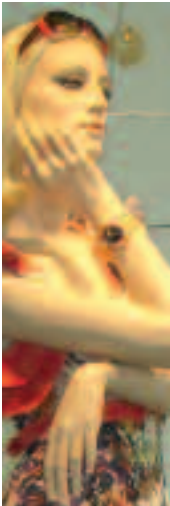
Plaza-Midwood, Myers Park and Dilworth neighborhoods offer a number of specialty boutiques along scenic oak-shaded streets. Trendy urban fashion, antiques and specialty items can be found scattered alongside Central Avenue heading to Plaza-Midwood. Myers Park and Dilworth, two of Charlotte's original streetcar suburbs, have boutiques with upscale clothing, home décor items and furniture for every taste and need. The shops are hidden in old houses and subdued shopping centers, but hold plenty of treasures. Twin Oaks Shopping Center features high-end boutiques, cosmetics and lingerie. Up and down East Boulevard, Dilworth's main thoroughfare, shoppers can peruse boutiques including Maddi's Gallery, which carries one of the biggest selections of Southern folk art in town.

Just a short drive from Charlotte, **Historic Waxhaw, Pineville** and the **Metrolina Expo** offer shoppers a wide selection of antiques and home furnishings. On the first Saturday of every month, the Metrolina Expo becomes the site of unthinkable bargains from more than 2,000 vendors during the Charlotte Antique & Collectibles Show. Among the 90 acres of treasures, expert antique collectors can find rugs, furniture, china, crystal, linens, toys, collectibles and vintage clothes. The antiques spectacular takes place every April and November. metrolinaexpotradeshows.com

To meet the increasing consumer demands of the northern half of Charlotte, one of the fastest growing regions in the nation, **Northlake Mall** opened in September 2005. The 1.1 million square foot regional shopping center lies in the northern suburbs of Charlotte. Approximately ten minutes from Center City Charlotte, the mall features more than 120 stores and restaurants in addition to its anchors: Belk, Dillard's, Macy's, Dick's Sporting Goods, and AMC Theatres. A Sports Court offers weary shoppers flat screen televisions, comfortable chairs, and bleacher seating near Dick's Sporting Goods. As a tribute to the area's outstanding furniture resources, most of Northlake's tables and chairs were handpicked from North Carolinian artisans and manufacturers.

The suburban shopping centers - **Stonecrest at Piper Glen** to the south and **Birkdale Village** to the north – each have an inviting vibe that beckons visitors back with its many clothing stores for men, women and children. Stonecrest features hip fashions and jewelry like The Jewel Box, garden stores and home accessory boutiques. At Birkdale Village, located off I-77, visitors can enjoy the pristine outdoor town center with favorites like Gap, Banana Republic, Ann Taylor Loft, Victoria's Secret and Williams-Sonoma. This suburban shopping center also features a gelato shop, occasional live music, movie theaters, and plenty of parking. birkdalevillage.net

Carolina Place Mall in Pineville, a Charlotte suburb, attracts visitors to its 140 specialty stores and five anchors: Belk, Dillard's, Hecht's, JCPenney and Sears. Carolina Place Mall has the requisite residents, Garden Ridge, Sam's Club and dozens of furniture stores lining the outer corridor of the mall, affectionately referred to as "furniture row" ranging from La-Z-Boy to Boyles Fine Furnishings. shopcarolinaplace.com



VISITCHARLOTTE.COM
FOR A LIST OF SHOPPING DESTINATIONS, LOG ONTO
WWW.VISITCHARLOTTE.COM AND SELECT SHOPPING.

